

BV Series Piston Vibrators

Need Help Now?

Call 800-842-7284 or visit
www.ChicagoVibrator.com



**Powerful linear force
dislodges tough
material flow
problems**

BV Series Pneumatic Piston Vibrators

BV Series pneumatic piston vibrators provide powerful linear force to keep your materials flowing in bins, hoppers, chutes, pipes, trucks, and more - anywhere that bridging or clinging impedes the flow of material.

The BV Series includes 11 different piston sizes from 1-1/8" to 8-1/4" diameters. From small batch hoppers to massive storage bunkers, there is a BV Series piston vibrator to fit the application. All sizes are available in Impacting or Air Cushioned models.

For the most forceful impact, choose the Impacting model. Where quiet operation is important, choose the Air Cushioned (non-impacting) model. Options like start springs and internal or external coatings allow customization to suit the specific requirements of your application, equipment, and location.

Standard features & benefits

- CNC Machined bodies & pistons ensure reliable operation
- Force & frequency are adjustable by varying supply air pressure
- Efficient operation - uses less air than rotary vibrators with comparable force
- Low maintenance when installed with proper air-prep components

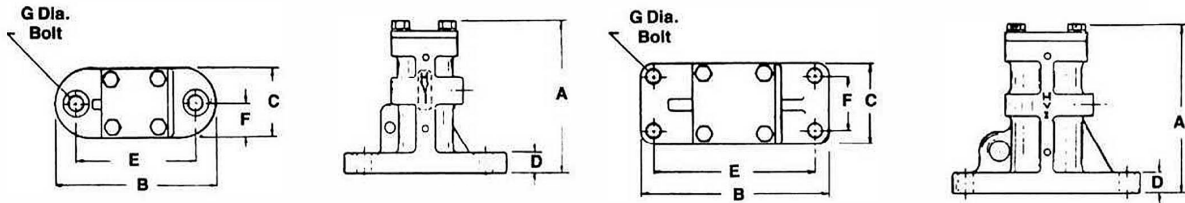
Available Options

- Internal start springs for vertical mounting
- Internal Tefkote for lubrication-free use or high-temp installations
- External coatings for food-grade or corrosive environments
- Tapped exhaust to route exhaust air away from sensitive locations

A few common applications include:

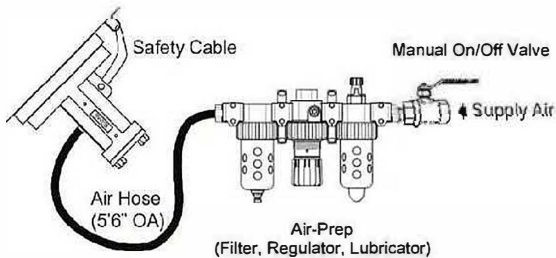
- Batch plant sand, cement & aggregate bins
- Batch plant weigh hoppers
- End dump trailers
- Hopper-Bottom trailers
- Coal bunkers
- Sugar, flower, and grain bins
- Volumetric Mixer Trucks
- Feed Hoppers
- Dust Collectors & Bag Houses
- Transfer pipes
- PV Truck Loading spouts

BV Series Technical Data



Model	A		B		C		D		E		F		G		Weight		Inlet
	in	mm	in	mm	in	mm	in	mm	in	mm	in	mm	in	mm	Lbs	Kgs	NPT
BV-112	3 1/4	83	4 1/2	114	2	51	3/4	19	3 1/2	89	1	25	1/2	13	4	2	1/4
BV-150	5 1/2	140	6	152	2 1/2	64	3/4	19	4 1/2	114	1 1/4	32	1/2	13	9	20	1/4
BV-175	7 1/4	184	9	229	3 1/2	89	1	25	7 1/2	191	1 3/4	44	5/8	16	17	37	1/4
BV-225	7 1/4	184	9	229	3 1/2	89	1	25	7 1/2	191	1 3/4	44	5/8	16	17	37	1/4
BV-225 L	10 1/2	267	9	229	3 1/2	89	1	25	7 1/2	191	1 3/4	44	5/8	16	30	66	1/4
BV-312	9 5/8	244	9 1/2	241	5	127	1 1/2	38	7 3/4	197	3 1/4	83	7/8	22	53	117	3/8
BV-350	9 5/8	244	9 1/2	241	5	127	1 1/2	38	7 3/4	197	3 1/4	83	7/8	22	53	117	3/8
BV-350 L	9 5/8	244	9 1/2	241	5	127	1 1/2	38	7 3/4	197	3 1/4	83	7/8	22	72	159	3/8
BV-425	12	305	14	356	6	152	1 1/2	38	12	305	4	102	1	25	98	216	1/2
BV-650	20	508	14	356	10	254	2	51	11	279	7	178	1 1/2	38	390	860	1/2
BV-825	22 1/2	572	16 1/2	419	12	305	2 1/4	57	13	330	8 1/2	216	2	51	600	1323	1/2

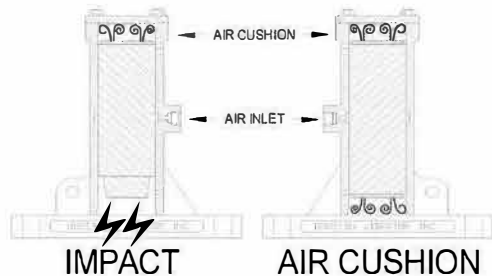
Typical Installation Air-Schematic



Single-unit manual installation for bins and hoppers is shown here for reference purposes.

Additional mounting and control options are available for multiple-unit and automated systems.

Impacting vs. Air Cushioned Configuration



Impacting units provide the most force, but also produce higher noise levels. Air Cushioned (non-impacting) models feature lower noise levels, but produce less force. When replacing an Impacting unit with an Air Cushioned, it may be necessary to use a larger model, or additional vibrators to achieve proper material flow.

VIBRATOR SIZE	Impacting	
	Force Lbs	Noise (dBA)
BV-112	189	113
BV-150	361	112
BV-225	649	116
BV-225 L	942	114
BV-350 L	2863	123

Distributed By:

ChicagoVibratorProducts
Flow and Compaction

Division of CVP Group
800-842-7284 (P)
866-247-7538 (F)
Solutions@ChiVib.com
www.ChicagoVibrator.com